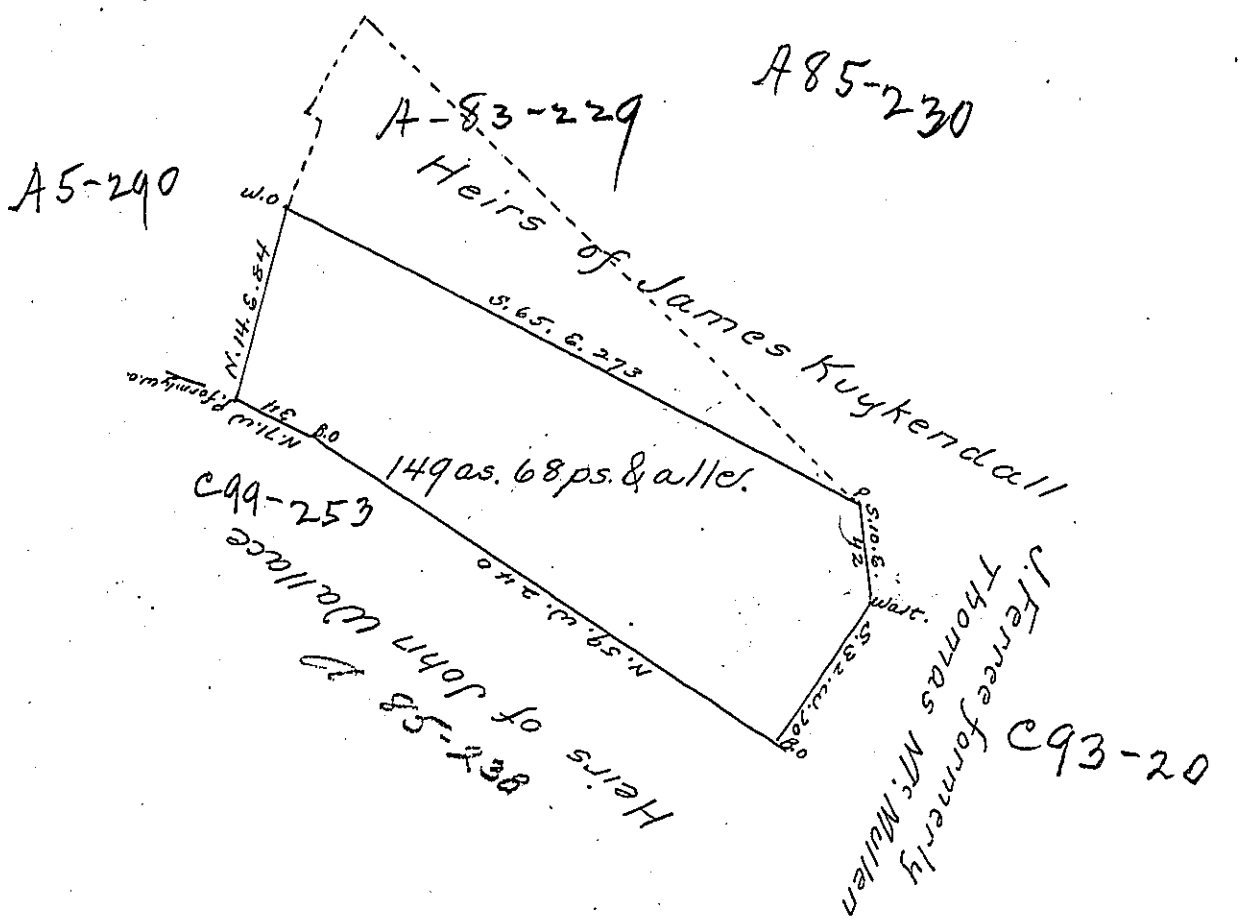


SWA 83-229

103

H34-280

2-233



Draught of a Survey of a tract of land containing one hundred and forty nine acres sixty eight perches and allowance situate on the Pine forks of Peters creek being part of a larger tract surveyed October 20th. 1786 for John Wallace assignee of James Wallace in pursuance of a Warrant dated May 18th. 1785

A. Patterson D.S.

January 23d. 1836

To Jacob Spangler Esq.
Surveyor General, Harrisburg

Note - the remainder of the tract was an interference with a survey made for James Kuykendall on a Virginia entry.

IN TESTIMONY that the above is a copy of the original remaining on file in the Department of Internal Affairs of Pennsylvania, made conformably to an Act of Assembly approved the 16th day of February, 1833, I have hereunto set my Hand and caused the Seal of said Department to be affixed at Harrisburg, this sixth day of May 1902

James W. Fatta
Secretary of Internal Affairs.